



image catalog

symbols behind the titles indicate size options.

- square: 14"x14" on paper, 12"x12" on metal
- rectangle: 11"x17" on paper, 11"x14" on metal
 - square: 12"x12" on canvas
 - rectangle: 12"x24" on canvas

www.SoulDuster.net
888.858.6687
227 Bellevue Way NE, #100
Bellevue WA 98004

Boats by Catherine Breer

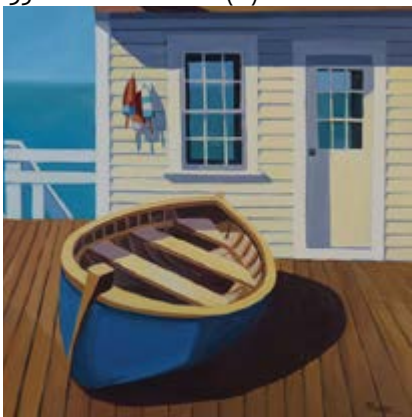
167 Schooner (■)



293 Chebeague Dorries (■ ■)



350 Beach House (■)



191 Afternoon Canoe Ride (■)



062 Laura's View (■)



166 Boat in Cove (■)



231 S Freeport Docks (■ ■)

Boats by Catherine Breer



230 Reflections (■)



112 S Freeport (■)



223 Tam O'Shanter (■ ■)



059 Beached Boats (■ ■)



105 Dinghies (■ ■)



101 Four Rowboats (■ ■)

Acadia by Catherine Breer



266 Carraige Path (■)



267 Bass Harbor (■)



268 Thuya Gardens (■)



269 View From Cadillac (■)



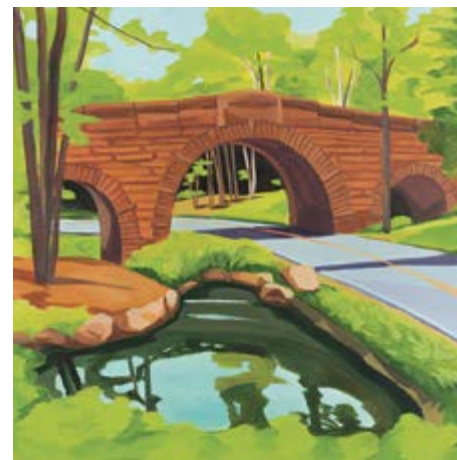
270 Jordan Pond (■)



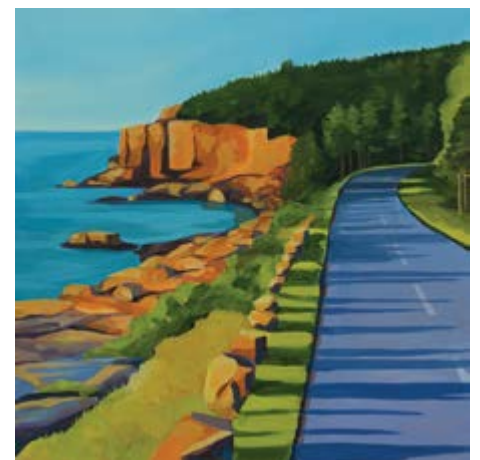
271 Bass Harbor Light (■)



272 Otter Cliffs (■)



276 Stone Bridge (■)



288 Park Loop Road (■)

Acadia by Catherine Breer



275 Sargent Mountain (■)



294 Anvil Trail (■)



295 Great Long Pond (■)



297 The Bubbles (■)



298 Wave Crashing (■)



296 Jesup Path (■)

Moody Skies by Catherine Breer



225 Dancing Light (■)



289 Vermont Spring (■ ■)



169 Kennebunkport Shacks (■)



260 Nightfall on Monhegan (■ ■)



017 Moonrise (■)



168 Vinalhaven Twilight (■ ■)

Lighthouses by Catherine Breer



185 Heron Neck Light (■)



299 Taking a Break (■)



357 Halfway Rock Lighthouse (■ ■)



116 Tenants Light (■)



186 House at Two Lights (■ ■ ■)



034 Portland Head Light (■)



271 Bass Harbor Light (■)

Coastal Living by Catherine Breer



121 View (■ ■■)



052 Afternoon (■■■)



234 Prouts Rocks (■■■)



115 The Vineyard (■ ■■)



233 My Favorite Place (■)



181 Boothbay (■)

Coastal Living by Catherine Breer



286 Family Outing (■ ■)



262 Afternoon Clouds (■ ■)



259 Beach Fence (■)



356 Fall Colors at the Pond (■)



261 Chatham Window (■ ■)

Coastal Living by Catherine Breer



344 Out for a Swim (■)



075 Lobster Buoys (■)



229 Spurwink Marsh (■)



283 Coastal Village (■)



067 Hammock on Bustins (■)

Neighborhood Walk by Catherine Breer



030 Morning Walk, Monhegan (■)



252 Barn on Stony Lake (■)



118 Old Dodge on Peaks Island (■)



179 Rosa Rugosa (■)



117 Monhegan Morning (■)



192 Provincetown Alley (■)

Neighborhood Walk by Catherine Breer



350 Down The Hill (■)



193 Rooster (■)



178 Towels on the Line (■)



355 Through the Gate (■)



811 Blueberries (■)

Encaustic Art by Annie Darling



198 Fuel (■)



310 Between the Lines (■)



253 In The Atmosphere (■)



221 Boys in the Wood (■)



303 Breffni (■)

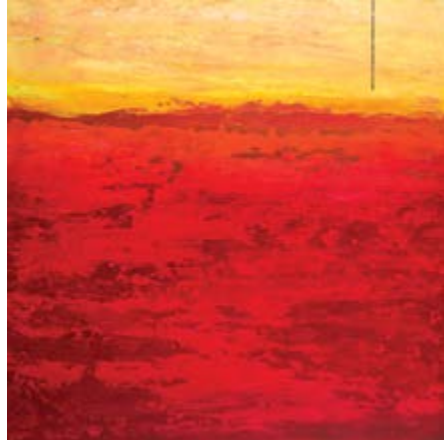


206 Going Under (■)

Encaustic Art by Annie Darling



200 Waiting It Out (■)



213 Dispersion (■)



309 Dancing in Shadows (■)



204 Skyline (■)



302 Stand Alone (■)



300 Falling for You (■)

Collage of Musings by Maggi Mason



610 Lavender (■)



607 Flight of Fancy (■)



608 Gazing into the Water (■)



609 Midnight Owl (■)



601 Monarchs (■)

Painted Stories by Stephen SoulDuster



730 I am Free (■)



710 Ashes to Ashes (■)



729 I Will Make It (■)



733 Stand By Me (■)



727 We Were Small and Christmas Trees Were Tall (■)

Painted Stories by Stephen SoulDuster



744 Sun Goes Down (■)



732 Here Comes The Sun (■)



746 Leap of Faith II (■ ■)



736 Row Row Row Your Boat (■)



734 Still A Kid (■)

About Our Artists



Catherine Breer ...

began drawing as soon as she could hold a pencil in her hand. She studied painting and drawing at the Atlanta College of Art and The Museum of Fine Arts School, Boston. Her work has been exhibited widely throughout New England, and is in private collections all over the world.

Growing up in Seoul, Korea, the vivid colors and graphic patterns found in Korean art have heavily influenced Catherine's style. Catherine's current focus is on landscape painting. She has lived along both coasts. Coastal towns and water views become a common subject matter.

"I am always looking for that moment when the light hits just right, the shadows lengthen and ordinary objects become something quite extraordinary. Reflections appear on the water, light dances on the side of a building, bottles line up in a window just right. It is these moments in time that I want to capture. The landscape of Maine is a never ending source of inspiration for me. The rocky coast, the dark green ocean, verdant valleys, the harbors, and the coastal towns." ~ Catherine

Annie Darling ...

was born in Chicago, Illinois and studied fine art and graphic design at the University of Oregon and at the University of Southern Maine where she graduated with a degree in Communication Arts. Annie has enjoyed a distinguished career as an artist, art director, and designer, receiving international acclaim for her visual design work. Her paintings can be found in public venues and private collections nation-wide. She began developing her encaustic technique in 2010.

"The encaustic medium fascinates me. After working with more traditional painting methods, however, I decided to create my own style of dealing with the wax and working with the encaustic process. Often I use various mediums in addition to the pigmented wax. In many cases, a piece will be composed of several paintings, portions of which reveal themselves through the layered wax.

As a fine artist, I feel it is my duty or calling to allow the work to become what it wants to be, and to not try and force it. I am influenced by my surroundings and by what I see and by what I hear. With all my senses engaged, the experience of the moment finds its way into my thoughts and suffuses itself in the work." ~ Annie

Maggi Mason ...

has lived and travelled in many countries spanning Europe, Far East, and America. The diverse cultures she experienced first hand reflect through her work. Her subject matters are varied as well. Besides landscape scenes from her travels, you will find pieces created from her interpretation of folksy traditions, myths and poems. Maggi likes to experiment with different media to reflect the excitement of movement and color. Her early artwork was mainly in oil. Her recent focus is on collage and mixed media.

"As an artist, I draw my inspiration from poems, songs, myths, memory and travels around the world. Most of my work comes from my imagination, and sometimes from memories of people and landscapes which have touched me in some way. Oftentimes, the pieces that seem to interest the audience most are the ones I feel most passionate about myself. Making art is a wonderful way of sharing." ~ Maggie

Stephen SoulDuster

"Art allows us to explore our emotions and feelings sometimes in ways that words cannot. Ever since I was a child, art has helped me verbalize my inner voice. This remains the focus of my art work, and that's another reason behind the name SoulDuster. To me, the emotions behind the artwork is more important than the aesthetics.

I paint songs, poems, and memories. Memories tell who you are and how you got here. Sing the songs, and let the lyrics guide you with your interpretation. Most of my works are oil on canvas, with abstract backgrounds that set the mood, and representational foregrounds that tell the stories. I very much hope that my work would resonate with my audiences' own life experiences and inspire them to explore their emotions.." ~ Stephen